

J Productions, Quality Education for the Dental Professional

THE RDAEF² NEWSLETTER

New RDAEF Course
Starting
December 2009

TELEPHONE
(916) 801-7170

FACSIMILE
(916) 852-7276

Second RDAEF Course Starting December 2009

Priority enrollment
now being taken.
Please read the
enclosed materials
carefully!

THE RDAEF² COURSE

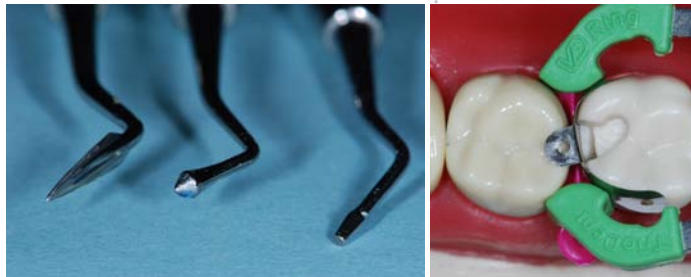
We are pleased to announce that our first RDAEF course that started in late May is proceeding with much enthusiasm on the part of the students, faculty and supervising employer dentists. Everyone can't wait to complete the course, pass the state boards and get busy performing all the new EF functions.

Many individuals that wanted to be enrolled into the first course were unable to do so because we will only take a limited number of students to control quality and results.

The Course

The course requires a significant time and economic commitment. We are therefore breaking it up into 3 sections for currently licensed RDAEFs and four sections for new RDAEFs. This will allow individuals to pay for each section as they go.... And have small breaks in the class schedule.

Individuals must successfully complete each section before proceeding to the next section. A failure of any section would require that the individual repeat that section for an additional enrollment fee or drop out of the program.



Join the
exciting new
RDAEF-2
Team!

Course Fees and EF Functions

What are the EF Duties?

(1) Conduct preliminary evaluation of the patient's oral health, including, but not limited to, charting, intraoral and extra-oral evaluation of soft tissue, classifying occlusion, and myofunctional evaluation.

(2) Perform oral health assessments in school-based, community health project settings under the direction of a dentist, registered dental hygienist, or registered dental hygienist in alternative practice.

(3) Cord retraction of gingiva for impression procedures.

(4) **Size and fit endodontic master points and accessory points.**

(5) Cement endodontic master points and accessory points.

(6) **Take final impressions for permanent indirect restorations.**

(7) Take final impressions for tooth-borne removable prosthesis.

(8) Polish and contour existing amalgam restorations.

(9) Place, contour, finish, and adjust all direct restorations.

(10) Adjust and cement permanent indirect restorations.

(11) Other procedures authorized by regulations adopted by the board.

(c) All procedures required to be performed under direct supervision shall be checked and approved by the supervising licensed dentist prior to the patient's dismissal from the office.

What is included in the class tuition?

We will of course be providing all instruction and instructional materials, handouts, etc. We will also be providing all consumable and restorative dental materials and some of the instruments that will not be utilized on the RDAEF boards, such as;

rubber dam instruments, bench mounts, Fletcher faces, amalgamators, etc. You will be required to place and finish glass ionomer, composite and amalgam restorations on both adult and pedo. typodonts. You will be completing over 200 different restorations during the course. To reduce your costs, we have purchased the pedo. typodonts for use during the program. Since you are required to have your own typodont for the RDAEF boards, that has been included in the mandatory instrument issue fee mentioned in the "course fees" area below.



What are the Course Fees?

The course fees for the 3 section course for **currently licensed RDAEFs is as follows.**

Section 1- \$ 4500

Section 2- \$ 3500

Section 3- \$ 3500

Mandatory Instrument Issue: \$1900

Mandatory lighted loupes.. we have a great vendor

The course fees for the 4 section course for **new RDAEFs is as follows.**

Section I- \$ 4500

Section 2- \$ 3500

Section 3- \$ 3500

Section 4- \$ 3000

Mandatory Instrument Issue: \$1900

Mandatory lighted loupes..we have a great vendor

An additional instrument list will be provided that most individuals can obtain from their

95% of all lectures will be provided in an on-line, virtual classroom, one evening per week throughout the course.

This will reduce the number of face-to-face meeting in Sacramento and will help reduce travel costs!
AND
everyone loves it!

Important Additional Information

ENROLLMENT REQUIREMENT AND OTHER GOOD STUFF!

What is needed to apply for the class ?

If you are enrolling into the course for **existing RDAEFs** you will need:

- Proof of current RDAEF licensure
- Current CPR certification
- A course in infection control and CDPA within the last 2 year license renewal
- A willingness to work hard and give up a bunch of weekends to upgrade your license and your career.

If you are enrolling into the course for **new RDAEFs** you will need the following:

- Proof of current RDA licensure
- Certification in pit and fissure sealants (*Contact SCC C.E. Dept. for Sept. course dates and fees (916) 558-2443 if you are not yet certified in sealants*)
- Current CPR certification
- A course in infection control and CDPA within the last 2 year license renewal
- A willingness to work hard and give up a bunch of weekends for the upgrade of your license and your career.
- 5 patients who have been prepared for crown preparations and are willing to attend the course

and have cord retraction and final impressions. Please note: Crown preparations must be done to our criteria.

Will I need a sponsoring dentist ?

No, If you are enrolling in the course for existing RDAEFs you will not need a dentist to be present at the course. With the exception of patient assessment, all procedures are done on typodonts.

If you are enrolling in the course for NEW RDAEFs, you will need patients prepared for 5 posterior crowns, but we are looking into having our clinical faculty doctors provide local anesthesia so that you do not have to have a dentist present at the course for those procedures. **This is NOT a guarantee however at this moment!** NOTE: *When you take your state boards for the cord retraction and final impression portion of the test, you will have to provide a dentist who can give local anesthesia. That is a dental board requirement, not ours.*

Are there going to be any tests during the course?

Yes... we will have written quizzes and examinations throughout the course, and several laboratory practical exams for each procedure to prepare you for the written and practical state boards. Our job is to see that you obtain the needed information, and your job is to work hard and study.

Who decides what subject areas have to be included in the course?

The Dental Board of California have strict guidelines as to what information must be included in the RDAEF course. We must follow these requirements, but will also make it fun as well ! The course is very comprehensive!

How will the course be offered?

We will offer the course two weekends per month. That would include both Saturday and Sunday. In addition, we will teach the majority of the didactic (lecture) in a virtual classroom online. The students in the current class love this format.

If I sign up for the course am I guaranteed to pass?

No, but many of you have taken classes from Sacramento City College and J Productions before and know we aim to help you be successful. This will not be an easy class by any means, but we know that at the end, you will be successful and have a whole new, exciting career ! We have been working toward this goal for many years and are probably even more excited than you are that it is finally here.

Will there be homework assignments on the procedures?

Once you have learned the correct way to perform the various restorations in class, we will be asking you to practice between sessions and return with your completed assignments for our evaluation. This will be in addition to classroom work. We know you will find that part of the course very rewarding!

Did you have a positive response to your original first course?

Yes. We had far more individuals wanting to enroll with full payment than we imagined. The large number of individuals requesting admission into the course has motivated us to start another session in December. We receive calls on a daily basis from dentists that want their assistants to attend this course.

Is there any financial aid available for the course.

Not to our knowledge..... but we suggest that you speak to your employer about the possibility of some assistance. You will be able to increase production by at least 50% -75% for your office, so it would be very positive for any dental practice to have an RDAEF 2.

We will be accepting checks, several credit cards, cash, or money orders for payment. And remember we will ask you to only pay for a section at a time.

It is important to have financial backing before you start the program. It would be sad to start and not be able to finish.

Will you accept payments for each section.

No, the full amount for each section is due 30 days in advance of that section.

When are payments due for the next course?

The new incoming class will be chosen by Oct 15, 2009. A Mandatory Instrument Issue fee of \$1900 and section 1 fee of \$4500 are required at the time of enrollment, no later than Nov. 1, 2009.

Payment for each additional section will be required 30 days before each session starts.

Section 2- \$ 3500

Section 3- \$ 3500

Section 4- \$ 3000 ** new EF only

When will the next EF course begin?

The course will start on Thursday, December 3, 2009 with your first virtual online classroom. We will have virtual classroom sessions on December 10 and 17 and then take a break for the holidays. The online sessions will start again on February 4th. All virtual classroom sessions will be on Thursday evenings from 7-9pm. A face-to-face session will occur on Sunday, December 13 in Sacramento. This session is an orientation, instrument issue distribution, and typodont equilibration. Additional sessions in Sacramento will not occur again until February 6/7, 2010. All face-to-face weekend session will be on the first and third weekends of the month unless they fall on major holidays.

What is needed to participate in the virtual classroom?

You will need the following:
A computer with a sound card and speakers (Most computers have both items)

High-speed internet connection

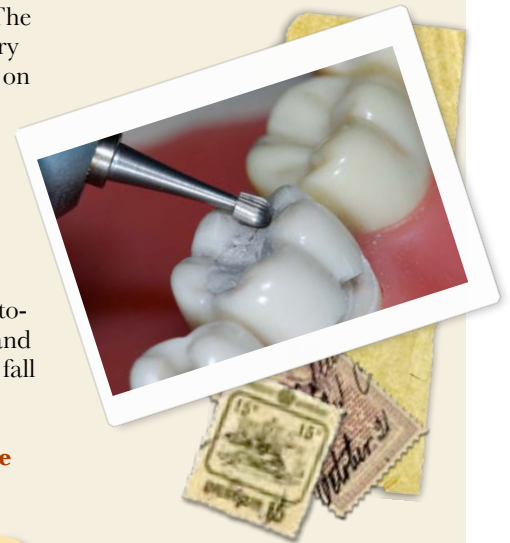
To be comfortable with the use of the internet and a computer.
Ask your kids... they can help!

Are the quizzes and tests online?

Yep!

How do I enroll?

Complete all the information on the following page and fax it back to us.



Be the change you want to see in the world.
Mahatma Gandhi

Magnification loupes of 2.5 or higher are required for class. We are working with a great company that offers students discounts and payment plans, and fabulous service and products. Designs For Vision



J Productions
Ph. (916) 801-7170
Fax- (916) 852-7276
rdaef4you@sbcglobal.net

Please complete the form below and fax it back to us at the number on the left. You may call us or e-mail us for additional information or questions.

Thanks

Joan Greenfield, RDAEF, MS

	PLEASE PRINT CLEARLY			
Name				
Street Address				
City, Zip code				
Mobile Phone				
Office Phone				
Home Phone				
e-mail Address				
License Status/ Lic. number	RDA	RDA with sealants cert.	RDAEF	
Current CPR	Yes	No		
Current Infection control and CDPA	Yes	No		
I have or will have a computer and high speed internet by November	Yes	No		
I am financially and academically ready to enroll in the December EF 2 course	Yes	No		
If I enroll in the EF2 course, I will be paying by:	Check	Credit Card	Combination	
I am currently employed in:	Private practice	Clinical setting	Education	Not currently employed

Completion of this form is the first step in possible enrollment in the December EF 2 Course. It does NOT guarantee that you will be accepted into the course. We will contact you for additional information. *Thanks*