

# J PRODUCTIONS DENTAL SEMINARS, INC.

QUALITY EDUCATION FOR THE DENTAL PROFESSIONAL

## THE RDAEF2 NEWSLETTER

**New RDAEF Course  
Starting  
June, 2012**

TELEPHONE  
(916) 801-7170

FACSIMILE  
(916) 852-7276

## Sixth RDAEF2 Course Starting June 23, 2012

Priority  
enrollment now  
being taken.  
Please read the  
enclosed  
materials

### THE RDAEF2 COURSE

We are pleased to announce that our EF2 courses continue to set the standards for dental education.. We have had outstanding pass rates on the state dental boards for EF2s averaging 98-100% The supervising employer dentists are thrilled at the performance of the graduates. Their contributions to the individual practices have been outstanding.

There is absolutely no downside to having my RDA become an EF2. It's a whole new dental profession that has enhanced my practice, and my patients love it."

*DDS, Fresno*

"Where has this been for the past 20 years? My EF2 has rejuvenated myself and my practice!"

*DDS, Bay area*

"I love all the new production numbers we are getting since my EF2 graduated, but even more than the production, I am smiling again at work... haven't done that for years"

*DDS, Northern CA*

I feel renewed... What a kick in the pants!

*DDS, San Francisco*

### The Course

The course requires a significant time and economic commitment. We are therefore breaking it up into 3 sections for currently licensed RDAEFs and four sections for new RDAEF students . This will allow individuals to pay for each section as they go....



Join the  
exciting new  
RDAEF-2  
Team!

# Course Fees and EF Functions

## What are the EF Duties?

(1) Conduct preliminary evaluation of the patient's oral health, including, but not limited to, charting, intraoral and extra-oral evaluation of soft tissue, classifying occlusion, and myofunctional evaluation.

(2) Perform oral health assessments in school-based, community health project settings under the direction of a dentist, registered dental hygienist, or registered dental hygienist in alternative practice.

(3) Cord retraction of gingiva for impression procedures.

(4) Size and fit endodontic master points and accessory points.

(5) Cement endodontic master points and accessory points.

(6) Take final impressions for permanent indirect restorations.

(7) Take final impressions for tooth-borne removable prosthesis.

(8) Polish and contour existing amalgam restorations.

(9) Place, contour, finish, and adjust all direct restorations.

(10) Adjust and cement permanent indirect restorations.

(11) Other procedures authorized by regulations adopted by the board.

*(c) All procedures required to be performed under direct supervision shall be checked and approved by the supervising licensed dentist prior to the patient's dismissal from the office.*

## What is included in the class tuition?

We will of course be providing all instruction and instructional materials, handouts, etc. We will also be providing all consumable and restorative dental materials and some of the instruments that will not be utilized on the RDAEF boards, such as; rubber dam instruments, bench mounts, Endodontic equipment, amalgamators, etc. You will be required to place and finish glass ionomer, composite and amalgam

restorations on both adult and pedo. typodonts. You will be completing over 300 different restorations during the course. To reduce your costs, we have purchased the pedo. typodonts for use during the program. Since you are required to have your own typodont for the RDAEF2 boards, that has been included in the mandatory instrument issue fee mentioned in the "course fees" area below.

## What are the Course Fees?

The course fees for the 3 section course for

**currently licensed RDAEFs is as follows.**

Section I- \$ 4500

Section 2- \$ 4500

Section 3- \$ 4500

Mandatory Instrument Issue: \$2600

Mandatory lighted loupes.. we have a great vendor

The course fees for the 4 section course for **new RDAEF students is as follows.**

Section I- \$ 4500

Section 2- \$ 4500

Section 3- \$ 4500

Section 4- \$ 4500

Mandatory Instrument Issue: \$2600

Mandatory lighted loupes..we have a great vendor

*An additional instrument list will be provided that most individuals can obtain from their office.*



95% of all lectures will be provided in an on-line, virtual classroom, one evening per week throughout the course.

This will reduce the number of face-to-face meeting in Sacramento and will help reduce travel costs and program length AND everyone loves it!

# Important Additional Information

## ENROLLMENT REQUIREMENT AND OTHER GOOD STUFF!

### What is needed to apply for the class ?

If you are enrolling into the course for **existing RDAEFs** you will need:

- Proof of current RDAEF licensure
- Current CPR certification
- Proof of Malpractice insurance

- A willingness to work hard and give up a bunch of weekends to upgrade your license and your career.

If you are enrolling into the course for **new RDAEFs** you will need the following:

- Proof of current RDA licensure
- Certification in pit and fissure sealants *We offer the class if you are not yet certified in sealants)*
- Current CPR certification

- Proof of Malpractice insurance

- A willingness to work hard and give up a bunch of weekends to upgrade of your license and your career.

- 5 patients who have been prepared for crown preparations and are willing to attend the course

and have cord retraction and final impressions.

**Please note: Crown preparations must be done to our criteria.**

### Will I need a sponsoring dentist ?

No, ..... If you are enrolling in the course for existing RDAEFs you will not need a dentist to be present at the course. With the exception of patient assessment, all procedures are done on typodonts.

If you are enrolling in the course for NEW RDAEFs, you will need patients prepared for 5 posterior crowns, but we have our clinical faculty provide local anesthesia so that you do not have to have a dentist present at the course for those procedures. *NOTE: When you take your state boards for the cord retraction and final impression portion of the test, you will have to provide a dentist who can give local anesthesia. That is a dental board requirement, not ours.*

### Are there going to be any tests during the course?

Yes... we will have written quizzes and examinations throughout the course, and several laboratory practical exams for each procedure to prepare you for the written and practical state boards. Our job is to see that you obtain the needed information, and your job is to work hard and study.

### Who decides what subject areas have to be included in the course?

The Dental Board of California have strict guidelines as to what information must be included in the RDAEF2 course. We must follow these requirements, but will also make it fun as well ! The course is very comprehensive!

### How will the course be offered?

We will offer the course two weekends per month. That would include both Saturday and Sunday. In addition, we will teach the majority of the didactic (lecture) in a virtual classroom online. The students in the previous classes love this format.

### If I sign up for the course am I guaranteed to pass?

No, .... but many of you have taken classes from Sacramento City College and J Productions before and know we aim to help you be successful. This will not be an easy class by any means, but we know that at the end, you will be successful and have a whole new, exciting career ! We have been working toward this goal for many years and are probably even more excited than you are that it is finally here. To date our pass rates on the state boards have been 97-100% pass.

**Will there be homework assignments on the procedures?**

Once you have learned the correct way to perform the various restorations in class, we will be asking you to practice between sessions and return with your completed assignments for our evaluation. This will be in addition to classroom work. We know you will find that part of the course very rewarding!

**Did you have a positive response to your first five courses?**

Yes. We had far more individuals wanting to enroll with full payment than we imagined. We receive calls on a weekly basis from dentists that want their assistants to attend this course.

**It there any financial aid available for the course.**

Not to our knowledge..... but we suggest that you speak to your employer about the possibility of some assistance. You will be able to increase production by at least 50% -75% for your office, so it would be very positive for any dental practice to have an RDAEF 2.

We will be accepting checks, several credit cards, cash, or money orders for payment. And remember we will ask you to only pay for a section at a time. *It is important to have financial backing before you start the program. It would be sad to start and not be able to finish.*

**Will you accept payments for each section.**

No, the full amount for each section is due at a specific time.

**When are payments due for the next course?**

A Mandatory Instrument Issue fee of \$2600 and section one fee of \$4500 are required at the time of acceptance for enrollment.

Payment for each additional section will be required at specific dates.

**When will the next EF course begin?**

A face-to-face session will occur on **Saturday and Sunday June 23/24, 2012** in Sacramento. This session is an orientation, instrument issue distribution, and first assignment. It will be a very full weekend.

All virtual classroom sessions will be on Thursday evenings from 7-9pm. **What is needed to participate in the virtual classroom?**

You will need the following:  
A computer with a sound card and speakers  
(Most computers have both items)

High-speed internet connection

To be comfortable with the use of the internet and a computer.  
*Ask your kids... they can help!*

**Are the quizzes and tests online?**

Yep!

**How can I be considered for enrollment?**

Complete all the information on the following page and fax it back to us.

Please note that the Dental Board of California has added a new requirement that each student must complete 20 restorations on patients prior to the completion of the program. This requirement will be completed in your clinic or office, with specific criteria and evaluation from our program faculty.

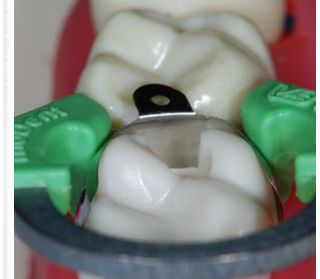


Be the change you want to see in the world.  
Mahatma Gandhi

Magnification loupes of 2.5 or higher are required for class. We are working with a great company that offers students discounts and payment plans, and fabulous service and products.

**Designs For Vision**

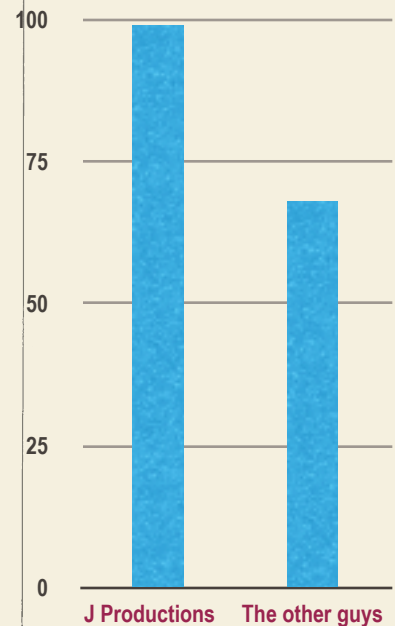




Q @ A

Are there any hidden costs within the program.	No. We provide you with a list of items to bring from your office, but all other materials and supplies including the cast crowns for the crown adjustment function are included.
Are there benefits to having all the lectures on-line.	First and foremost... the students love this format.... And all the lectures are also recorded so you can review anytime you wish. In addition, it save a lot of travel costs because you don't need to travel to class as often.
Why do you think you have such consistently high pass rates on the state boards and great responses from employer dentists?	Education is a passion for us! We have been helping dental professionals achieve their professional goals for 40 years. We have a great reputation for quality courses because we believe a piece of us goes with you into the state examinations and into your practice.... And of course, we have great students!
Why do you require loupes?	Simply put... you will be amazed at the difference it makes in the quality of your restorations!

EF2 State Boards



**J Productions**  
**Ph. (916) 801-7170**  
**Fax- (916) 852-7276**  
[rdaef4you@sbcglobal.net](mailto:rdaef4you@sbcglobal.net)

Please complete the form below and fax it back to us at the number on the left. You may call us or e-mail us for additional information or questions.

Thanks

*Joan Greenfield, RDAEF2, MS*

	PLEASE PRINT CLEARLY			
Name				
Street Address				
City, Zip code				
Mobile Phone				
Office Phone				
Home Phone				
e-mail Address				
License Status/ Lic. number	RDA	RDA with sealants cert.	RDAEF	
Current CPR	Yes	No		
Current Infection control and CDPA	Yes	No		
I have or will have a computer and high speed internet by November	Yes	No		
I am financially and academically ready to enroll in the <b>October, 2011</b> EF 2 course	Yes	No		
If I enroll in the EF2 course, I will be paying by:	Check	Credit Card	Combination	
I am currently employed in:	Private practice	Clinical setting	Education	Not currently employed

Completion of this form is the first step in possible enrollment in the **June 2012** EF 2 Course. It does NOT guarantee that you will be accepted into the course. We will contact you for additional information. *Thanks*